

# INSTALLATION MANUAL

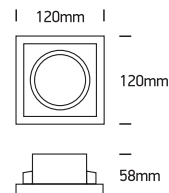
50103GT4

**ecolight**



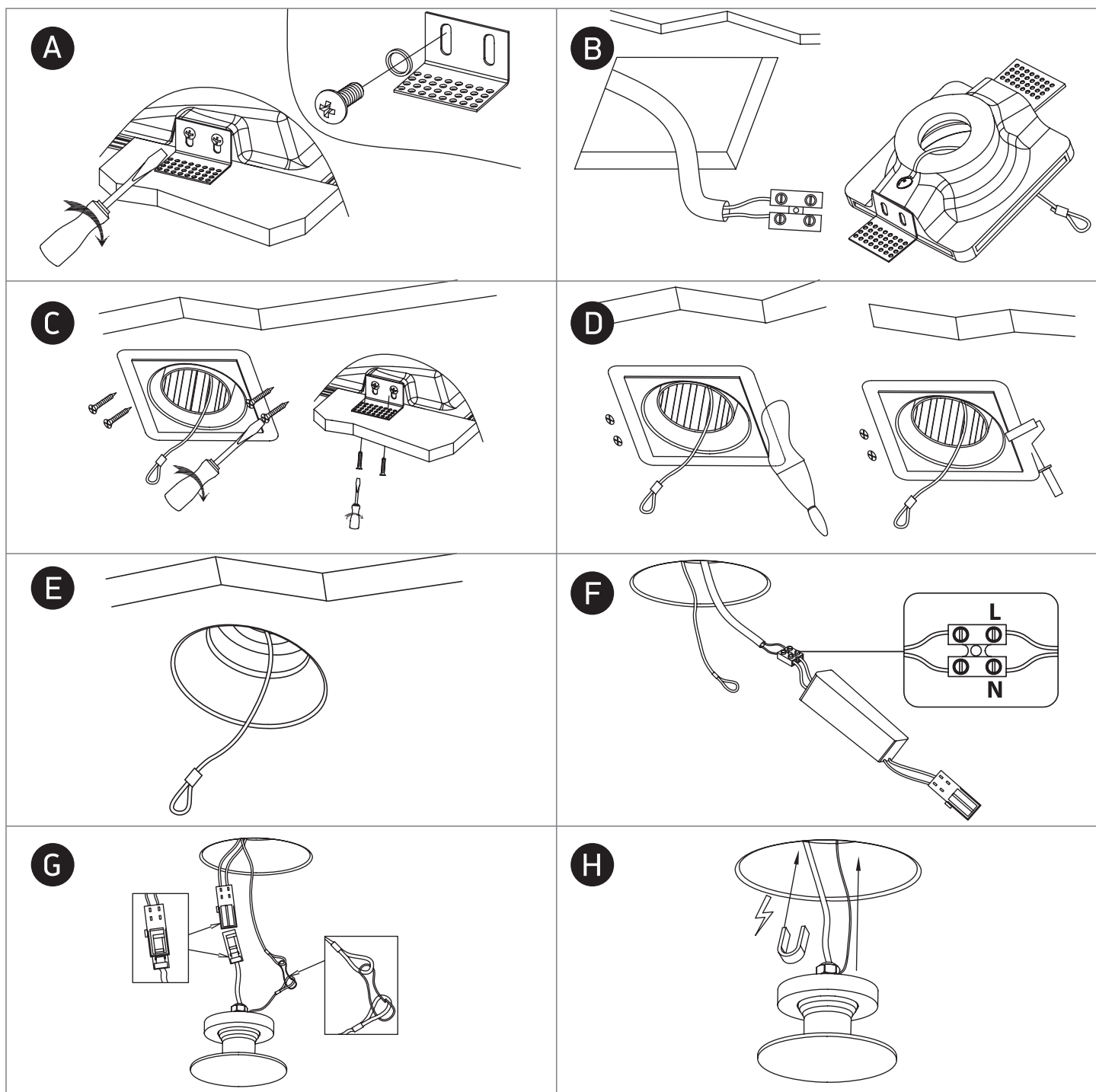
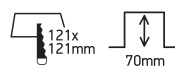
Ra>80

DARK  
LIGHT



100-240V | SMD LED | 2,5W | IP44 | Gypsum

Complete with driver.



## Warnings:

1. Make sure that the product is installed properly before connecting to electricity.
2. Do not cover the fitting.
3. Maintenance and installation should only be carried out by a professional electrician.